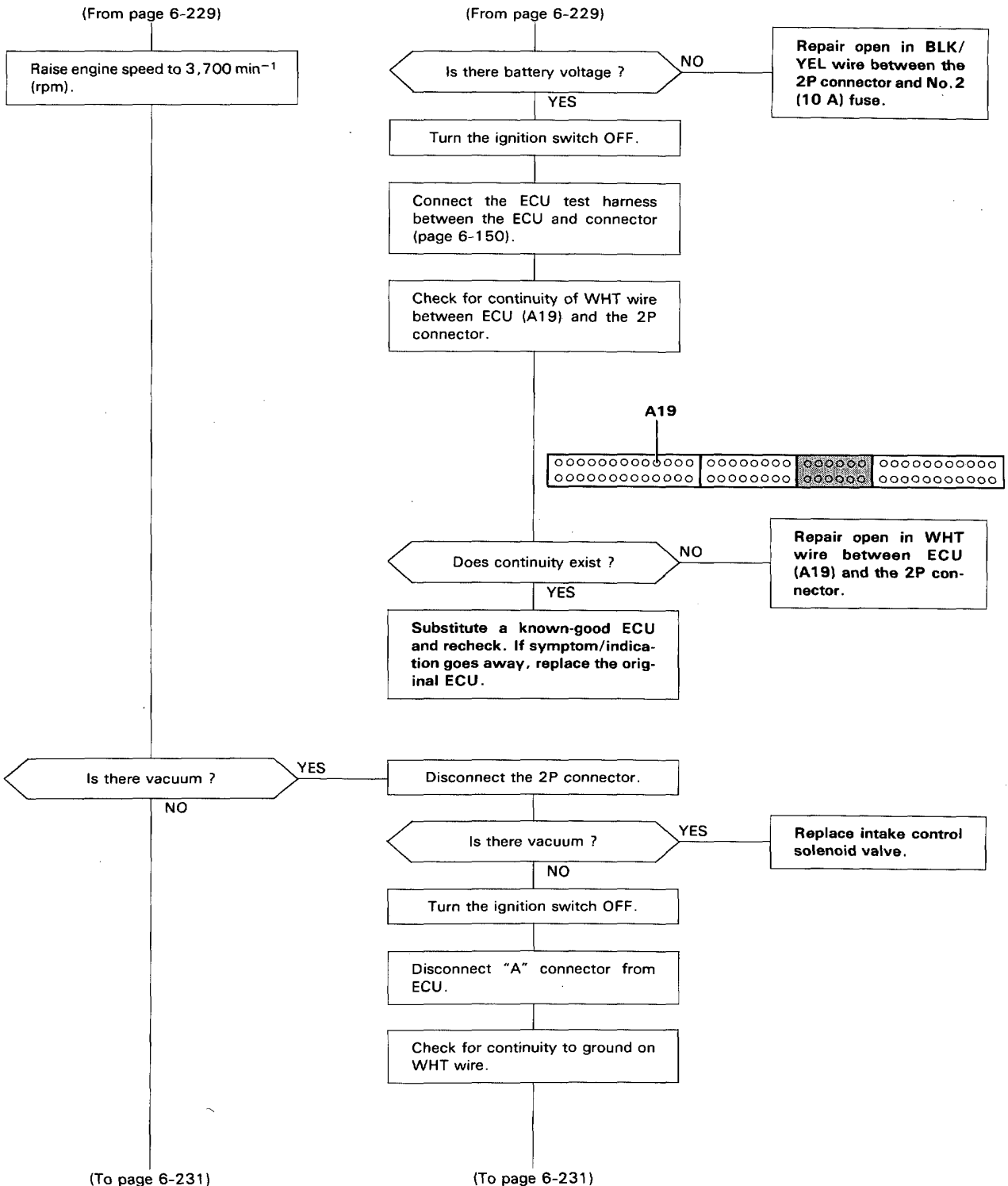


# Air Intake System

## Intake Control System (cont'd)





(From page 6-230)

(From page 6-230)

Is there continuity to ground ?

YES

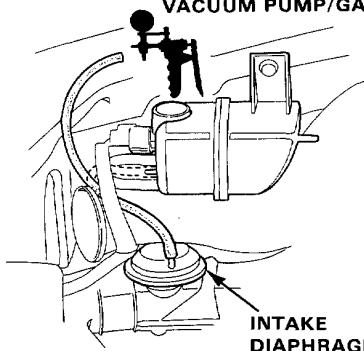
Repair short to ground in WHT wire between ECU (A19) and the 6P connector.

NO

Substitute a known good ECU and recheck. If symptom goes away, replace the original ECU.

Connect a vacuum pump to the #8 vacuum hose.

VACUUM PUMP/GAUGE



INTAKE DIAPHRAGM

Apply vacuum.

Does it hold vacuum ?

NO

Check the vacuum line for proper connection or disconnected hose. If OK, replace the intake diaphragm.

YES

Intake control system is OK.

# Emission Control System

## System Troubleshooting Guide

NOTE: Across each row in the chart, the systems that could be sources of a symptom are ranked in the order they should be inspected starting with ①. Find the symptom in the left column, read across to the most likely source, then refer to the page listed at the top of that column. If inspection shows the system is OK, try the next most likely system ②, etc.

With CATA:

PAGE	SUB SYSTEM	CATALYTIC CONVERTER	EGR SYSTEM (except KQ)	POSITIVE CRANKCASE VENTILATION SYSTEM	EVAPORATIVE EMISSION CONTROLS
SYMPTOM		234	235	240	241
ROUGH IDLE			①	②	
FREQUENT (AFTER STALLING (WARMING UP)			①		
POOR PERFORMANCE	FAILS EMISSION TEST	①			②
	LOSS OF POWER	①			

KY:

PAGE	SUB SYSTEM	POSITIVE CRANKCASE VENTILATION SYSTEM	EVAPORATIVE EMISSION CONTROLS
SYMPTOM		240	241
ROUGH IDLE		①	
POOR PERFORMANCE (FAILS EMISSION TEST)			①